

Minnesota rebate programs



The following rebates and incentive opportunities are available through the 2024–2026 Minnesota Energy Conservation and Optimization (ECO) plan.

Heat pumps

Documentation of qualifying efficiency ratings may be found through AHRI at ahridirectory.org. Indoor and outdoor components must match to qualify for rebates and tax credits. Air-to-water heat pump efficiencies are based on manufacturer specification sheets.

To qualify for our rebates, equipment must meet the performance requirements below. For federal tax credits or incentives, follow the federal Inflation Reduction Act (IRA) rating requirements. Our rebates can be claimed in addition to federal incentives.

Minnesota air conditioner (AC) and heat pump rebates

Type	Configuration	Required ratings*		Rebate
		SEER2	HSPF2	
ENERGY STAR® AC	Ducted/ductless	≥ 15.2	—	\$100/unit
Standard heat pump	Ducted/ductless	≥ 14.3	≥ 7.5	\$300/ton
Cold-climate heat pump	Ductless	≥ 16.0	≥ 8.0	\$600/ton
Cold-climate heat pump	Ducted	≥ 16.0	≥ 8.0	\$800/ton

Contractors: Always provide an AHRI certificate to your customers for tax and rebate documentation.

Customers: Always get and keep an AHRI certificate for your new system. Submit copies with your rebate application.

Type	Required ratings	Rebate per ton
Air-to-water	COP ≥1.7 A5W110	\$800
Geothermal: Residential	See table on page 11.	\$1,200
Geothermal: Commercial		\$900

Federal IRA 25C tax credit requirements

Type	SEER2	EER2	HSPF2	COP at 5°F	Capacity ratio
CCE Tier 1—Path A	≥ 16.0	≥ 9.8	≥ 8.5	≥ 1.75	≥ 60% at 5°F/47°F
CCE Tier 2—Path B	≥ 16.0	≥ 11.0	≥ 8.0	≥ 1.75	≥ 45% at 5°F/47°F

HEAT PUMPS ON ENERGY CONTROL RECEIVE ADDED BENEFITS!

A customer may receive an additional **\$40-per-ton rebate** when an ECO rebate-eligible cold-climate or geothermal heat pump is installed on our Dual Fuel, Deferred Load, or RDC Rate, or when a qualified air-to-water heat pump is installed on our Dual Fuel Rate.

- Commercial customers installing **an ECO-eligible heat pump may qualify for financing options in addition to receiving rebates.**
- ECO energy-efficiency rebates won't exceed 75 percent of project costs. Geothermal heat pump rebates won't exceed 50 percent of project costs.
- **For more information please review our rebate guidelines on page 2.**



COLD-CLIMATE HEAT PUMPS (CCHPs)

CCHPs operate at an overall seasonal efficiency of 250 percent or more. They offer customers heating and cooling at a fraction of the cost of fossil fuel systems and deliver comfort down to sub-zero temperatures. **Our rebates combined with federal tax credits make these systems highly cost-effective installations.**

GEOHERMAL HEAT PUMPS (GHPs)

GHPs are clean, safe, efficient, and environmentally friendly and can deliver four to six units of heat for each unit of energy used. As a result, GHPs can reduce annual heating and cooling costs by up to 70 percent.

Geothermal heat pump ratings

GHP	Loop type	COP	EER
Water to air	Open loop	4.1	21.1
Water to air	Closed loop	3.6	17.1
Water to water	Open loop	3.5	20.1
Water to water	Closed loop	3.1	16.1
Direct exchange	—	3.6	16
GHP single unit \geq 6 tons	—	3.1	13

AIR-TO-WATER HEAT PUMPS (AWHPs)

AWHPs improve the efficiency of hydronic underfloor heat storage systems by using free energy available in the air and transferring it through water for heating. This makes an AWHP a great option to upgrade the efficiency of an existing hydronic underfloor heating system or for a new system installation where geothermal might not be feasible. When paired with a buffer tank containing transfer coils, an AWHP can provide added savings by preheating domestic hot water.

BUFFER TANK OR DESUPERHEATER

Add a buffer tank to an ECO-qualified AWHP or a desuperheater to an ECO-qualified GHP installation and receive an additional **\$200-per-ton rebate** when used for domestic hot water preheating. Buffer tank requires heating coils.

Tonnage based on associated heat pump unit. Limit 20 tons.


HEAT PUMP WATER HEATER

A customer who installs a heat pump water heater can receive a **\$200 rebate**.

QUALITY INSTALLATION REBATE

Opportunities for certified HVAC installers: Put your training and expertise to work for your customers while you build your business. Contractors certified through the following are eligible to offer customers Quality installation rebates:

- North American Technician Excellence (NATE).
- Minnesota Air Source Heat Pump Collaborative.
- Manufacturer or distributor sponsored training.
- Similar preapproved certifications.

 Visit otpc.com/certification for more information on certification options.

Be sure to forward your certifications to us to add to our online Find a contractor tool.

A customer can receive an additional rebate of **\$200 per ton** for a quality heat pump installation and **\$50 per unit** for a quality air-conditioner installation. Applies to central or ductless mini-split systems.

HEAT PUMP AND AIR-CONDITIONING MAINTENANCE TUNE UP

A residential or commercial customer can receive a **\$150 rebate** for a heat pump tune up and a **\$75 rebate** for an air-conditioner tune up. A tune up must be completed by a licensed contractor and include coil cleaning, refrigeration charge check, air filter cleaning, and air flow measurement and correction if not done by homeowner or contractor at equipment installation. A customer can receive one rebate for each account once every ten years.

Electric water heating

A customer that installs a new electric water heater with a uniform energy factor (UEF) of .90 or higher may qualify for a controlled water heater rebate when it's served on our Deferred Load, Dual Fuel, Controlled Water Heating, or Residential Demand Control Rate. Firm service rates also may qualify when an energy control device is connected.



Receive a \$10-per-month bill credit. A customer may choose to connect a radio receiver to their firm service electric panel to avoid the cost of adding an additional service panel and meter.

Application/size	Kilowatt requirements	Conditions	Rebate
≥ 80-gallon tank	Minimum of 4.5 kW	New controlled load	\$400
≥ 80-gallon tank	Minimum of 4.5 kW	Replacement controlled load	\$200
≥ 50-gallon < 80-gallon tank	Minimum of 4.5 kW	New controlled load	\$200
≥ 50-gallon < 80-gallon tank	Minimum of 4.5 kW	Replacement controlled load	\$100
Minimum 120-gallon storage capacity, heavy duty commercial	Minimum of 12 kW	New or replacement controlled load; \$5,000 maximum rebate	\$50/kW

Contractors: We don't unlock water heaters. Be sure you have access to electronic or manual keys for the specific brand of water heater sold before installing a locked grid-enabled water heater.

Rebate information on heat pump water heaters can be found on page 16. Controlled service isn't required for a heat pump water heater rebate.

Electric heating technology rebates

Rebates are available for electric heating technologies when a minimum of 9 kilowatts (kW) is permanently connected and served through our Dual Fuel or RDC Rate.

- Receive a **\$20-per-kW rebate** for baseboard, cove heat, garage unit heater, or radiant electric heating including floor warming.*
- Receive a **\$40-per-kW rebate** for an electric plenum heater, electric boiler, ducted electric furnace, ECO-qualified cold-climate or geothermal heat pump, or electric cable or panel storage heating system.**
- Rebate for electric cable or panel storage heating is limited to Dual Fuel Rate installations only. For RDC Rate installations see our thermal-storage rebate on page 14.



*Floor warming is nonstorage heating placed beneath flooring material.

** Electric cable or panel storage heating is limited to installations under new construction slab foundations.

Residential insulation

Customers who use electricity as their main heat source in their homes may receive **up to \$2,800 in rebates** on the cost to purchase and install qualifying insulation improvements. Rebates include:

- **Up to \$1,000** for attic bypass sealing and insulation.
- **Up to \$1,000** for upgraded wall insulation.
- **Up to \$800** for air sealing and weather stripping.



Rebate is based on 40 percent of material and installation costs. Homes must achieve qualifying R values. Rebate forms must include type and quantity of insulation installed, description of existing insulation, location in the home where insulation was added, R-value reached after installation, and name of the installer. Rebates can be combined with federal tax credits for 30 percent of the cost of materials up to \$1,200. Program excludes new residential construction.

Window rebates

Customers who use electricity as their main heat source in their homes may receive a **\$25 rebate** per window meeting ENERGY STAR® Version 7.0 Northern Climate Zone requirements. Both new construction and retrofits are eligible.

Window rebates

Measure	Minimum efficiency requirements	
Window replacement	ENERGY STAR® Version 7.0 Northern Climate Zone	
U-factor	Solar heat gain coefficient	Qualification
≤ 0.22	≥ 0.17	ENERGY STAR® Northern Climate Zone
0.23	≥ 0.35	Equivalent energy rating
0.24		
0.25	≥ 0.40	
0.26		

Appliance rebates

Receive rebates on eligible, standard-sized ENERGY STAR®-rated appliances.

Eligible appliances include:

Appliance rebates

Rebate	Appliance
\$200	Heat pump water heater
\$50	Refrigerator
\$50	Chest or upright freezer
\$50	Dishwasher
\$50	Clothes washer
\$50	Electric clothes dryer
\$50	Heat pump clothes dryer
\$50	Induction cooktop or range with induction cooktop
\$25	Air purifier
\$25	Dehumidifier



Limit one rebate per appliance type.

Compact refrigerators and freezers less than 7.5 cubic feet don't qualify.

Dehumidifiers must have a minimum capacity of 50 pints per day.

Appliance recycling

Customers may recycle **up to two old, but working, refrigerators or freezers per year**. During the same appointment a customer also may recycle a working, but inefficient, window air conditioner and dehumidifier. Pickup is free with service available May 1 through October 31.

Appliance recycling rebates

Rebate	Appliance
\$50	Refrigerator 10 cubic feet and larger
\$50	Freezer 10 cubic feet and larger
\$25	Window air conditioner (limit 2)
\$10	Dehumidifier (limit 2)



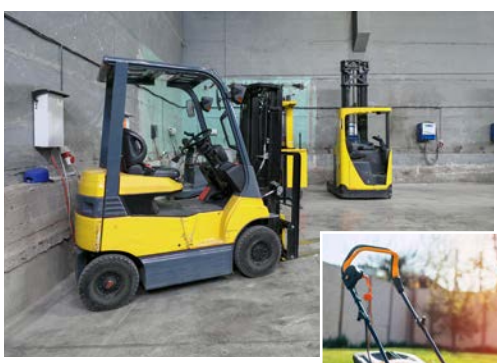
 Visit otpc.com/ApplianceRecycling for more information about scheduling a pickup.

Electric equipment rebates

Customers who purchase new electric technologies can receive rebates.

Residential new electric equipment	Rebate per unit
Push lawnmower	\$250
Riding lawnmower	\$750
Snow blower	\$150
Lawn tools (weed trimmer, leaf blower)	\$25

Commercial new electric equipment	Rebate per unit
School bus	\$5,000
Push lawnmower	\$100
Riding lawnmower	\$500
Forklift: Under 6,000-pound lifting capacity	\$2,500
Forklift: Over 6,000-pound lifting capacity	\$3,000



Electric vehicle rebates

A customer who purchases an electric vehicle (EV) from a qualified dealer can receive a rebate that may be combined with federal tax credits. Rebate levels are as follows:

Electric vehicle type	Rebate per vehicle	Federal tax credit per vehicle*
New Battery Electric Vehicle (BEV)	\$3,000	\$7,500
New Plug-in Hybrid Electric Vehicle (PHEV)	\$1,500	\$7,500
Used Battery Electric Vehicle (BEV)	\$1,500	\$4,000
Used Plug-in Hybrid Electric Vehicle (PHEV)	\$750	\$4,000

*Review IRS guidelines to confirm electric vehicle federal tax credit amounts. Vehicle eligibility is continually updated based on manufacturer production changes. Visit irs.gov/clean-vehicle-tax-credits for more information.

Note: Used electric vehicles must be purchased from a licensed dealer to be eligible for rebates. Private-to-private sales aren't eligible. For a review of EV usage costs, see page 64.

Electric vehicle charging station

A customer installing a Level 2 electric vehicle charging station as permanently connected load on an eligible rate may qualify for a **\$500 rebate**. Our rebate can be combined with a federal tax credit for 30 percent of costs up to \$1,000. Eligible rates include Dual Fuel, Deferred Load, Fixed Time of Service, RDC, and our Electric Vehicle Charging Rate. See page 52.



Smart thermostats

A residential customer who installs a qualified Tier II or Tier III smart thermostat may receive a rebate. Rebate level is dependent on thermostat communication capabilities (tier level) and use of electricity for heating and/or cooling. **Only one rebate per household.** Rebate may not exceed the thermostat invoice amount.

- Rebates of **\$100 for Tier II and \$150 for Tier III** qualifying smart thermostats are available to customers who use central heating electric technologies including air-source heat pumps, geothermal heat pump systems, plenum heaters, and boilers.
- Rebates of **\$100 for Tier III** qualifying **line voltage** smart thermostats are available to customers who use non-central heating electric technologies as their primary heat source, including baseboard.
- Rebates of **\$35 for Tier II and \$50 for Tier III** qualifying smart thermostats are available to customers with electric cooling but without electric heating.



 Find the current list of qualifying smart thermostat models online at otpc.com/SmartThermostats.

Lighting

Customers that install energy-efficient lighting technologies may qualify for rebates as shown in the tables on the following page.

- Preapproval is required for rebates exceeding \$4,500.
- LED exit lighting doesn't qualify for new construction lighting rebates.

Commercial customers may qualify for all rebates. Rebates for lighting controls are based on total wattage of lighting load connected to the control technology.

Residential customers may qualify for hardwired retrofit replacement lighting and new construction lighting rebates when rebate amount exceeds \$20. Screw-in lighting rebates for retrofit and new construction aren't available except through point-of-sale rebates at participating retail stores.



For more information about fluorescent lamps, high-intensity discharge (HID) lamps and ballasts, and disposal requirements, contact your local county recycling offices.

Or, in Minnesota, call the Minnesota Pollution Control Agency at **800-657-3864**.

In-store rebates are available through select retailers in our area, resulting in greatly discounted purchase prices. No paperwork required! Visit otpc.com/LEDs.

Replacement lighting

Existing	Replaced with	Rebate per watt saved
Low-efficiency incandescent	Screw-in LED indoor (with and without removal prevention devices)	20¢
	Screw-in LED outdoor (with and without removal prevention devices)	10¢
	Hard-wired LED indoor	60¢
	Hard-wired LED outdoor	40¢
Low-efficiency fluorescent	Hard-wired LED	60¢
Standard T8 fluorescent lamps	LED lamp-only retrofit	40¢
Mercury-vapor lamps	Hard-wired LED indoor	60¢
	Hard-wired LED outdoor	40¢
	Screw-in LED indoor	40¢
	Screw-in LED outdoor	20¢
Standard HID	Hard-wired LED indoor	60¢
	Hard-wired LED outdoor	40¢
	Screw-in LED indoor	40¢
	Screw-in LED outdoor	20¢
Exit lighting fixtures	High-efficiency exit lighting (based on maximum demand reduction of 20 watts/fixture)	60¢
Occupancy/daylight sensing controls		\$200/connected kW
Luminaire level lighting controls		\$200/connected kW

New construction lighting systems

Installed lighting	Wattage	Rebate per unit
LED fixtures (indoor)	<30	\$15.00
	30 to 49	\$25.00
	50 to 79	\$35.00
	80 to 99	\$50.00
	>99	\$75.00
LED fixtures (outdoor)	<30	\$10.00
	30 to 49	\$15.00
	50 to 79	\$20.00
	80 to 99	\$25.00
	>99	\$30.00
LED screw-in (indoor)	<10	\$1.25
	10 to 24	\$3.50
	25 to 49	\$8.00
	50 to 75	\$13.50

Installed lighting	Wattage	Rebate per unit
LED screw-in (outdoor)	<10	\$1.00
	10 to 24	\$1.50
	25 to 49	\$3.50
	50 to 75	\$6.00
LED agricultural (indoor)	100 to 149	\$85.00
	150 to 199	\$125.00
	200 to 249	\$175.00
	250 to 299	\$200.00
	>200	\$250.00
Controls (motion/daylight sensors)		\$200/connected kW
Luminaire level lighting controls		\$200/connected kW

*Screw-in bulb rebates are available for commercial customers only.

Drive Power

ADJUSTABLE-SPEED DRIVES (ASDs)

Reduce energy use up to 50 percent by installing an ASD to match motor speed to the requirements of a fluctuating load.

- **\$60-per-horsepower rebate** for nonseasonal centrifugal applications.
- **\$40-per-horsepower rebate** for seasonal and HVAC centrifugal applications.

ELECTRONICALLY COMMUTATED MOTORS (ECMs)

Rebates are available for commercial customers that retrofit existing exhaust and HVAC fans with energy-efficient ECMs. Rebate is based on motor horsepower.

HAND DRYERS

A commercial customer who purchases an electric hand dryer can receive a **rebate of \$250 per dryer**. Hand dryers must operate without electric heating elements to qualify.

MOTORS

Our motor rebate program encourages industrial, commercial, and agricultural customers to purchase energy efficient new, replacement, or retrofit motors.

- 2007 EISA legislation set NEMA Premium® as the efficiency standard for 1 horsepower to 200 horsepower totally enclosed fan-cooled (TEFC) and open drip-proof (ODP) motors manufactured after December 2010.
- Motor efficiency **must exceed** NEMA Premium® efficiency to qualify for rebates for new motors and replacement of nonoperating motors.
- TEFC and ODP motors replaced prior to failure **must meet** NEMA Premium® efficiency levels to qualify for rebates.
- Certain qualified motors may have limited availability in the market.

System designer or installing contractor must ensure the entire facility complies with the IEEE Standard 519 after completion of the ASD installation or retrofit. Failure to comply with this rule may result in disqualification of any rebate request.

ECM rebate

Horsepower	Rebate
0.125	\$15
0.25	\$30
0.33	\$50
0.50	\$70
0.75	\$100
1.0	\$125
1.5	\$175



Totally enclosed fan-cooled motor rebates

HP	Percent rated efficiency 1200 RPM		Percent rated efficiency 1800 RPM		Percent rated efficiency 3600 RPM		Rebate per motor
	New and replacement of nonoperating motors	Replacement of operating motors	New and replacement of nonoperating motors	Replacement of operating motors	New and replacement of nonoperating motors	Replacement of operating motors	
1	84.0	82.5	86.5	85.5	78.5	77.0	\$40
1.5	88.5	87.5	87.5	86.5	85.5	84.0	\$60
2	89.5	88.5	87.5	86.5	86.5	85.5	\$80
3	90.2	89.5	90.2	89.5	87.5	86.5	\$90
5	90.2	89.5	90.2	89.5	89.5	88.5	\$150
7.5	91.7	91.0	92.4	91.7	90.2	89.5	\$230
10	91.7	91.0	92.4	91.7	91.0	90.2	\$300
15	92.4	91.7	93.0	92.4	91.7	91.0	\$450
20	92.4	91.7	93.6	93.0	91.7	91.0	\$600
25	93.6	93.0	94.1	93.6	92.4	91.7	\$600
30	93.6	93.0	94.1	93.6	92.4	91.7	\$700
40	94.5	94.1	94.5	94.1	93.0	92.4	\$800
50	94.5	94.1	95.0	94.5	93.6	93.0	\$1,000
60	95.0	94.5	95.4	95.0	94.1	93.6	\$1,100
75	95.0	94.5	95.8	95.4	94.1	93.6	\$1,200
100	95.4	95.0	95.8	95.4	94.5	94.1	\$1,600
125	95.4	95.0	95.8	95.4	95.4	95.0	\$2,000
150	96.2	95.8	96.2	95.8	95.4	95.0	\$2,400
200	96.2	95.8	96.5	96.2	95.8	95.4	\$2,800
250	95.8	95.8	96.2	96.2	95.8	95.8	\$3,500
300	95.8	95.8	96.2	96.2	95.8	95.8	\$4,200
350	95.8	95.8	96.2	96.2	95.8	95.8	\$4,200
400	95.8	95.8	96.2	96.2	95.8	95.8	\$5,000
450	95.8	95.8	96.2	96.2	95.8	95.8	\$6,000
500	95.8	95.8	96.2	96.2	95.8	95.8	\$7,000

Open drip-proof motor rebates

HP	Percent rated efficiency 1200 RPM		Percent rated efficiency 1800 RPM		Percent rated efficiency 3600 RPM		Rebate per motor
	New and replacement of nonoperating motors	Replacement of operating motors	New and replacement of nonoperating motors	Replacement of operating motors	New and replacement of nonoperating motors	Replacement of operating motors	
1	84.0	82.5	86.5	85.5	78.5	77.0	\$40
1.5	87.5	86.5	87.5	86.5	85.5	84.0	\$60
2	88.5	87.5	87.5	86.5	86.5	85.5	\$80
3	89.5	88.5	90.2	89.5	86.5	85.5	\$90
5	90.2	89.5	90.2	89.5	87.5	86.5	\$150
7.5	91.0	90.2	91.7	91.0	89.5	88.5	\$230
10	92.4	91.7	92.4	91.7	90.2	89.5	\$300
15	92.4	91.7	93.6	93.0	91.0	90.2	\$450
20	93.0	92.4	93.6	93.0	91.7	91.0	\$600
25	93.6	93.0	94.1	93.6	92.4	91.7	\$600
30	94.1	93.6	94.5	94.1	92.4	91.7	\$700
40	94.5	94.1	94.5	94.1	93.0	92.4	\$800
50	94.5	94.1	95.0	94.5	93.6	93.0	\$1,000
60	95.0	94.5	95.4	95.0	94.1	93.6	\$1,100
75	95.0	94.5	95.4	95.0	94.1	93.6	\$1,200
100	95.4	95.0	95.8	95.4	94.1	93.6	\$1,600
125	95.4	95.0	95.8	95.4	94.5	94.1	\$2,000
150	95.8	95.4	96.2	95.8	94.5	94.1	\$2,400
200	95.8	95.4	96.2	95.8	95.4	95.0	\$2,800
250	95.4	95.4	95.8	95.8	95.0	95.0	\$3,500
300	95.4	95.4	95.8	95.8	95.4	95.4	\$4,200
350	95.4	95.4	95.8	95.8	95.4	95.4	\$4,200
400	95.8	95.8	95.8	95.8	95.8	95.8	\$5,000
450	96.2	96.2	96.2	96.2	95.8	95.8	\$6,000
500	96.2	96.2	96.2	96.2	95.8	95.8	\$7,000

Explosion-proof motor rebates

HP	Percent rated efficiency 1200 RPM	Percent rated efficiency 1800 RPM	Percent rated efficiency 3600 RPM	Rebate per motor
1	82.5	84.0	76.0	\$40
1.5	86.5	84.0	84.0	\$60
2	85.5	85.5	84.0	\$80
3	87.5	85.5	85.5	\$90
5	88.5	88.5	86.5	\$150
7.5	90.0	90.0	86.5	\$230
10	90.0	90.0	89.5	\$300
15	91.0	91.7	90.2	\$450
20	90.0	91.7	90.2	\$600
25	92.0	93.0	91.0	\$600
30	92.4	93.0	91.0	\$700
40	93.6	93.6	92.0	\$800
50	93.6	93.6	92.4	\$1,000
60	94.1	94.0	93.0	\$1,100
75	94.0	94.5	93.6	\$1,200
100	94.5	94.5	93.6	\$1,600
125	94.5	95.0	94.1	\$2,000
150	95.0	95.4	94.1	\$2,400
200	95.0	95.8	95.0	\$2,800
250	95.0	95.0	95.0	\$3,500
300	95.0	95.4	95.4	\$4,200

Commercial refrigeration

Commercial refrigeration rebates are available for qualifying high-efficiency refrigeration technologies including LED display case lighting, condenser systems, subcooling

systems, refrigerated display cases, strip curtains, night shades, and air-circulation systems. **Rebates apply to new and retrofit applications unless otherwise noted.**

Commercial refrigeration rebates

Case measures	Incentive
Antisweat heater control (retrofit)	\$20/linear ft. of case
Antisweat heater control—condenser-based	\$40/linear ft. of case
Case lighting controls (retrofit)	\$60/linear ft. of case
Door addition to open cases—cooler (retrofit)	\$50/linear ft. of case
Door addition to open cases—freezer (retrofit)	\$75/linear ft. of case
High evaporator temperature cases	\$20/linear ft. of case
High-efficiency glass doors	\$40/linear ft. of case
LED lighting—low-temp	\$100/door
LED lighting—mid-temp	\$100/door
Night shades—coolers and freezers	\$20/linear ft. of case
Replace island case—multideck with doors (retrofit)	\$45/linear ft. of case
Thermal expansion valve (TXV) to electronic expansion valve (EEV)	\$15/total rack HP
Condenser measures	Incentive
Adiabatic condensers (new)	\$45/total rack HP
Low-speed condenser fans (new)	\$165/total rack HP
Preservation of condenser subcooling (retrofit)	\$40/HP
Solid-state condenser fan controls (retrofit)	\$50/HP

Fan motor measures	Incentive
High-efficiency evaporator fan motor (new)	\$10/motor
High-efficiency evaporator fan motor (retrofit)	\$40/motor
Permanent magnet fan motor (new)	\$10/motor
Permanent magnet fan motor (retrofit)	\$40/motor

Compressor measures	Incentive
Conversion to solid-state compressor controls (retrofit)	\$50/HP
Digital capacity modulation	\$30/total rack HP
Floating head pressure on rack (retrofit)	\$25/HP
Floating head pressure (stand alone)	\$60/HP
Parallel rack (retrofit)	\$100/HP

Other measures	Incentive
Outdoor air cooling (natural cool)	\$2/cfm airflow
Strip curtains—coolers and freezers	\$8.50/square ft. of curtain

Preventive maintenance discounts

Compressor horsepower serviced	Customer price	Maximum reimbursement
1 to 30 HP	\$29.95	\$525
31 to 100 HP	\$39.95	\$800
101 to 200 HP	\$49.95	\$1,050

Publicly Owned Property (POP) Solar

We offer our Publicly Owned Property Solar program to eligible public entities including public education facilities and city, county, or tribal governments. This program is designed to showcase the benefits of solar photovoltaic (PV) generation and support projects that assist local communities. Federal and state incentives can combine with our rebate to reduce or eliminate upfront costs.

POP Solar projects may qualify for an incentive of **\$1,500-per-kilowatt AC** of nameplate-generating capacity, and up to 50 percent of project installation costs for qualifying solar PV projects.



To qualify, customers must:

- Participate in energy-efficiency projects including implementing any with a simple payback of two years or less based on an assessment by our company of onsite energy-efficiency opportunities.
- Submit cost-effectiveness evaluation of the proposed solar PV installation.
- Use North American Board of Certified Energy Practitioners (NABCEP) certified solar PV installers.
- Develop a community/school/campus awareness, participation, and educational integration plan.
- Select a site that offers optimal solar PV generation potential to maximize the benefits of distributed solar PV installations across our company's Minnesota service area.
- Agree to transfer the renewable energy credits (RECs) from the POP Solar installation to our company.

Our POP Solar rebate may be combined with Solar for School and federal Inflation Reduction Act incentives, which include direct payment options to nonprofit organizations.

Custom efficiency project grants

Custom efficiency project grants help customers make efficiency upgrades that benefit their unique business operations. Eligible applications that may qualify include but aren't limited to:

- Air compressors
- Chillers
- Process improvements
- Commercial electric cooking equipment
- Heat-recovery systems
- Building envelope improvements

Grants are calculated based on kilowatt-hours of energy saved, kilowatts of demand reduced, and project costs. Thorough documentation is required for proper evaluation prior to approval. Incentives for grant projects may be capped.

Integrated Building Design Plus

Our FREE design assistance program allows qualifying building owners, architectural and engineering firms, and developers to participate in an integrated design process that puts energy efficiency at the forefront of plans for new construction.

Buildings must be at least 5,000 square feet and exceed baseline energy efficiency by 5 percent to qualify. Benefits include:

- Free computerized energy-use modeling of design alternatives.
- Reimbursements to your architectural and design teams for time commitments.
- Cash incentives for incorporating energy efficiency into your final building design.
- Review of construction documents to ensure that your final building plans reflect intended efficiency.
- Verification to confirm that your building has been constructed to meet intended efficiency levels.
- Assistance for design professionals in optimizing geothermal heating and cooling opportunities.



The best opportunity to impact the energy use of your new building is during the design phase.

Recommissioning energy studies

Recommissioning and retrocommissioning, both commonly referred to as RCx, are processes that ensure specific building systems perform interactively according to the design intent and the owner's operational needs.

Note: Commercial compressed-air system and refrigeration studies are also available. See pages 24 and 25 for details.

Recommissioning ensures that a previously commissioned building is running at optimal performance.

Retrocommissioning involves tuning up an existing building that never was commissioned formally after construction. The retrocommissioning process identifies less-than-optimal performance in an existing facility's HVAC systems and identifies cost-effective energy-saving adjustments.

Several program options are offered.

Pre-approval is required.

TRADITIONAL RCx

Traditional RCx is a six-month or longer study process to gather data on energy-using systems in a commercial building.

The benefits include:

- **A rebate of 30 percent of the RCx study cost and \$400 per kilowatt saved, up to \$20,000**, for eligible customers upon implementation of required measures.
- Potential energy cost savings up to 20 percent.
- A more comfortable facility with fewer occupant complaints.
- Longer equipment life.
- A detailed building assessment completed by a qualified engineering professional.

Eligible buildings must contain at least 50,000 square feet of conditioned space.

TURNKEY RCx

Turnkey RCx identifies energy-saving projects and ensures that upgrades are completed on time, so savings of up to 20 percent on energy bills begin rapidly. The cost of approved Turnkey RCx studies are reimbursed as follows:

- **First half paid** when the study is completed.
- **Second half paid** when implementation of all required efficiency improvements are successfully completed.

Eligible buildings must contain at least 50,000 square feet of conditioned space.

Contact your Energy Management Representative or Industrial Services Engineer (see page 3) early in the development of your project to learn more about these programs.

RCx LITE

RCx Lite offers lower study costs and a shorter timeline with reduced energy-saving requirements. RCx Lite measures may include tuning set points, optimizing controls, and using low/no cost upgrades capable of achieving savings of 3 percent to 12 percent in most facilities. RCx Lite offers:

- Savings of up to 75 percent of those achieved in a traditional, but more costly RCx study—often for as little as 25 percent of the cost.
- A rebate of 50 percent of the cost of the RCx Lite study up to a maximum of \$10,000 upon completion of required measures.

Eligible buildings must have 25,000 to 50,000 square feet of conditioned space.

TURNKEY RCx LITE

This is a fast-track, low-risk program to help building owners capture energy savings from existing building equipment and operations.

- Customers often cut 5 percent to 10 percent of energy costs by participating.
- A rebate up to \$9,500 per participant can cover 100 percent of the program cost.

Eligible buildings must have a digital control of their building's HVAC equipment via a building automation system (BAS).

